

### ADDENDUM NO. 3

Date: April 27, 2021  
Project: Red Rocks Dialysis  
Owner: DaVita  
Architect: Searer, Robbins & Stephens, Inc.  
1730 E. Northern Avenue, Suite 124  
Phoenix, Arizona 85020

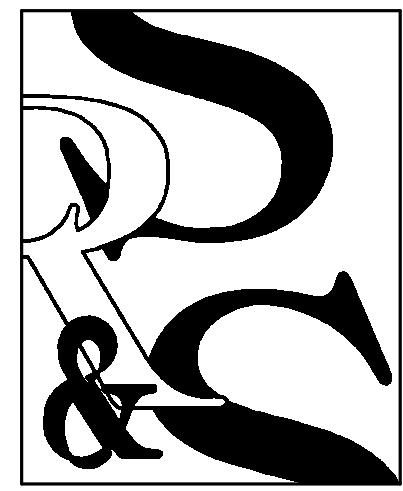
Architect's Project #: 2038

The following revisions to the plans and/or specifications shall become a part of the above-mentioned contract documents:

#### Drawings

1. Add disconnect switch to electrical service per attached revised sheets E-300 and E-400, with clouds and delta one dated 04-27-21.
2. Clarification: Landlord is NOT responsible for installing the new 600Amp underground feeder from transformer.

END OF ADDENDUM NO. 3



SEARER, ROBBINS & STEPHENS, INC.  
ARCHITECTURE  
1730 EAST NORTHERN AVENUE, SUITE 124, PHOENIX, ARIZONA 85020 (602) 277-1187 FAX (602) 277-9879  
PLANNING  
INTERIORS

DRAWN \_\_\_\_\_ VS  
CHECKED \_\_\_\_\_ BMW  
JOB NO. \_\_\_\_\_ 2038  
DATE \_\_\_\_\_ 03/05/20

REVISIONS  
1 04/27/21 Revision #1

C.O.A.#1046 PE/LS EXPIRES: JUNE 30,2021  
**PEC**  
PROFESSIONAL ENGINEERING CONSULTANTS, P.A.  
1924 S. UTICA AVE., SUITE 1400, TULSA, OK 74104  
918-684-5400 www.pec1.com



**DaVita**  
Red Rocks Dialysis  
9945 WEST REMINGTON PLACE  
LITTLETON, COLORADO 80128

SHEET NO.  
**E-300**

**BMS SYSTEM INSTALLATION**

**CONTRACTOR NOTES:**  
CONTRACTOR TO ROUTE LIGHTING CONTROLS TO BMS SYSTEM UTILIZING SSX & BMS PANELS. COORDINATE PANELS LOCATIONS, POWER, DATA, AND ANY ADDITIONAL REQUIREMENTS WITH UNIFY ENERGY SOLUTION PRIOR TO BID, AND INCLUDE ALL ASSOCIATED COSTS IN BID WITH NO ADDITIONAL COST TO OWNER.  
**CONTRACTOR TO PROVIDE FOLLOWING ITEMS:**  
- PROVIDE STUB UPS FOR TIMED LIGHTING OVERRIDE (TLO) PER PRINTS.  
- INSTALL UNIFY PROVIDED LIGHTING CONTACTORS.  
- WIRE HIGH VOLTAGE LIGHTING CIRCUITS TO CONTACTORS.  
- PROVIDE STUB UPS FOR ROOM TEMPERATURE SENSORS. REFER TO MECHANICAL SHEETS FOR MORE INFORMATION.  
- PROVIDE CONDUIT STUB UP FROM PLUMBING TO RTUS CONNECTIONS. REFER TO MECHANICAL SHEETS FOR MORE INFORMATION.  
- PROVIDE 200V DEDICATED CIRCUIT FOR BMS PANEL.  
- RUN INTERCONNECTING WIRING FROM BMS PANEL TO SSX PER UNIFY SUBMITTALS.  
PROVIDE ALL ITEMS AS REQUIRED FOR FULL WORKING OPERATION PER MANUFACTURER RECOMMENDATIONS.

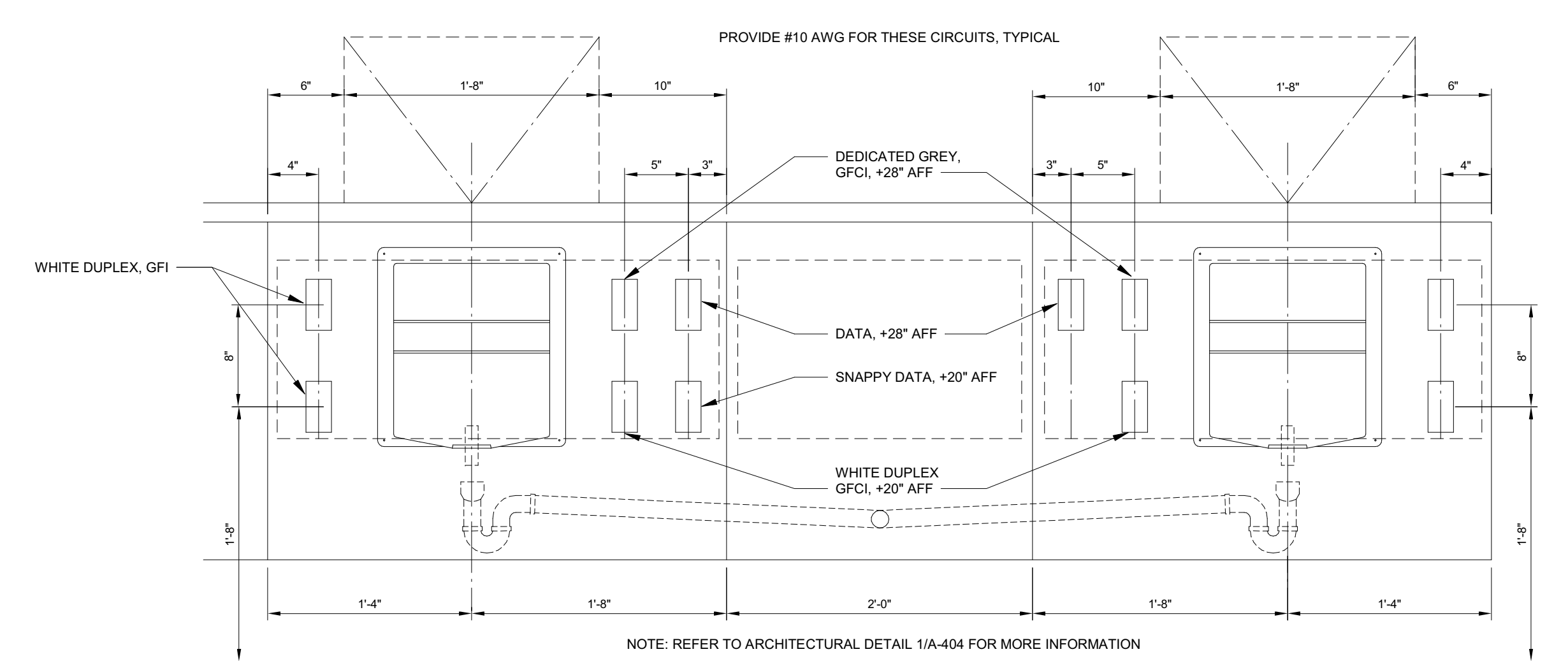
**COORDINATION NOTES**

1. REFER TO JOB SPECIFIC NOTES ON SHEET A-100.
2. MECHANICAL, PLUMBING, AND ELECTRICAL SUBCONTRACTORS ARE REQUIRED TO COORDINATE WITH EACH OTHER, REFER TO ALL SHEETS IN THE SET FOR CONSTRUCTION CONDITIONS, NOT JUST THE DRAWINGS PERTAINS TO THEIR DISCIPLINE.
3. FINAL LOCATION OF ALL SURFACE FEATURES ARE TO BE VERIFIED WITH ARCHITECTURAL DRAWINGS AND/OR ARCHITECT PRIOR TO INSTALLATION.
4. ALL WORK SHALL BE PERFORMED BY PROPERLY LICENSED MECHANICS / PLUMBERS OR UNDER THEIR DIRECT SUPERVISION.
5. ALL EXPOSED PIPE, CONDUITS, AND DUCTWORK TO BE PREPARED BY TRADE FOR PRIME AND FINAL PAINT BY G.C., SEE ARCHITECTURAL SPECIFICATIONS.

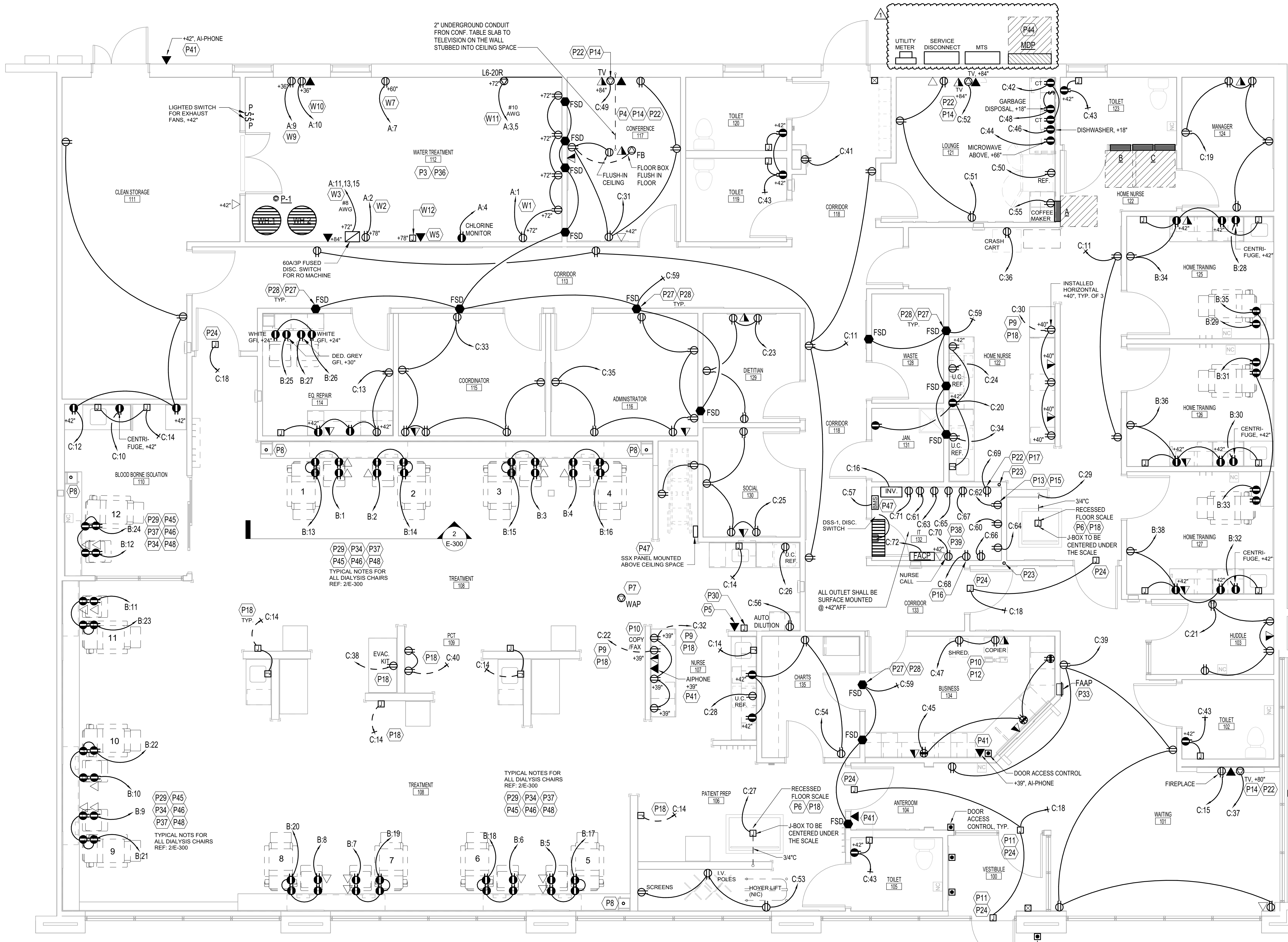
**CONTRACTOR BID NOTES:**  
CONTRACTOR TO PROVIDE AND RECORDS FOR GROUND RECEPTACLE TESTING IN PATIENT CARE AREA AS PER LATEST NFPA 90, AND TEXAS DEPARTMENT OF STATE HEALTH SERVICES REQUIREMENTS.  
CONTRACTOR TO PROVIDE SHOW WINDOW RECEPTACLES AND ASSOCIATED POWER AS REQUIRED PER NEC 210.62. COORDINATE IN FIELD WITH OWNER FOR EXACT RECEPTACLE LOCATIONS PRIOR TO START ANY WORK.  
ALL RECEPTACLES WITHIN 6FT. OF A SINK TO BE GFCI PROTECTED PER NEC 210.8(B)(5).  
CONTRACTOR TO PROVIDE POWER TO EXTERIOR MONUMENT SIGN VIA CIRCUIT C-74, 20A/1P, #10W. CIRCUIT SHALL BE CONTROLLED VIA CONTACTOR.  
CONTRACTOR TO PROVIDE POWER FOR EUH-1, LOCATED IN FIRE RISER ROOM. REFER TO SHELL DOCUMENTS FOR MORE INFORMATION. PROVIDE POWER VIA CIRCUIT C-82.84.

**GENERAL NOTES:**  
PROVIDE HOSPITAL GRADE RECEPTACLES AND STAINLESS STEEL COVER PLATES IN PATIENT PREP, TREATMENT, NURSE'S STATIONS, EXAM, PRIVATE, EOP, REPAIR AND ISOLATION ROOM.  
COORDINATE THE HEIGHT AND EXACT LOCATION OF DATA AND POWER OUTLETS PRIOR TO INSTALLATION.  
ALL DATA/PHONE CONDUITS NEED TO BE INSTALLED WITH PULL STRING INDOOR UNIT SHALL BE POWERED FROM 3 WIRES CONNECTED TO OUTDOOR UNIT.

REFER TO SHEET E-101 FOR GENERAL POWER NOTES, POWER KEYNOTES, AND WATER TREATMENT KEYNOTES.

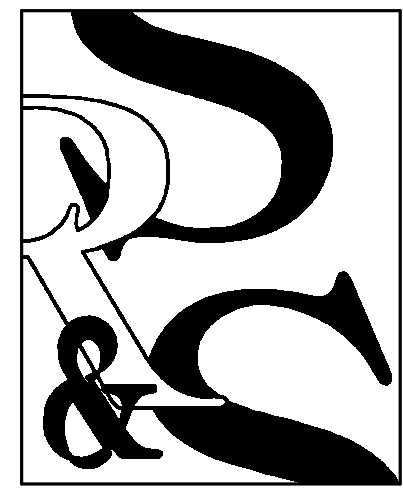


**2 TREATMENT STATION ELEVATION, TYP.**  
NTS



**1 POWER PLAN**  
0' 2' 4' 6' 1/4" = 1'-0"

COPYRIGHT, THESE DRAWINGS AND DESIGNS ARE THE PROPERTY OF SEARER, ROBBINS & STEPHENS, INC. ALL RIGHTS RESERVED. NO PART OF THESE DRAWINGS IS TO BE REPRODUCED OR TRANSMITTED IN ANY FORM OR BY ANY MEANS, ELECTRONIC OR MECHANICAL, WITHOUT PERMISSION IN WRITING FROM SEARER, ROBBINS & STEPHENS, INC.



SEARER, ROBBINS & STEPHENS, INC. ARCHITECTURE INTERIORS PLANNING 1730 EAST NORTHERN AVENUE, SUITE 124, PHOENIX, ARIZONA 85020 (602) 277-1187 FAX (602) 277-9879

DRAWN VS CHECKED BMW JOB NO. 2038 DATE 03/05/20

REVISIONS 1 04/27/21 Revision #1

C.O.A. #1046 PEELS EXPIRES: JUNE 30, 2021 PEC PROFESSIONAL ENGINEERING CONSULTANTS, P.A. 1924 S. UTICA AVE., SUITE 1400, TULSA, OK 74104 918-664-5400 www.pec1.com



DaVita Red Rocks Dialysis at 9945 WEST REMINGTON PLACE LITTLETON, COLORADO 80128

SHEET NO. E-400

MAIN DIST. PANEL: MDP. 208Y/120 VOLTS, 3 PHASE, 4 WIRE. 600 AMP MAIN BKR, SURFACE MTD. 65000 AIC LABELED. Table with columns: CIRC NO., LOAD V.A., LOAD TYPE, LOAD DESCRIPTION, AMP SIZE, W/GRD. BUS, LOAD DESCRIPTION, LOAD TYPE, LOAD V.A., CIRC NO.

1) BREAKER SHALL BE HACR RATED FOR MECHANICAL EQUIPMENT.

PANELBOARD: B. 208Y/120 VOLTS, 3 PHASE, 4 WIRE. 225 AMP MLO, FLUSH MTD. 42000 AIC LABELED. Table with columns: CIRC NO., LOAD V.A., LOAD TYPE, LOAD DESCRIPTION, AMP SIZE, W/GRD. BUS, LOAD DESCRIPTION, LOAD TYPE, LOAD V.A., CIRC NO.

1) CONTROLLED VIA PHOTOCELL/TIMELOCK. 2) ALL EMERGENCY LIGHTING FIXTURE SHALL BE POWERED VIA LIGHTING INVERTER (LVS, MODEL: CEPS-A-2000-120V). REFER TO LIGHTING PLAN SHEET E-200, AND LIGHTING SCHEDULE ON SHEET E-500 FOR MORE INFORMATION. CONTRACTOR TO PROVIDE ALL CONTROLS AS REQUIRED AS PER MANUFACTURER REQUIREMENTS, AND REFER TO INVERTER SPECIFICATION AND DETAILS FOR WIRING INFORMATION. 3) PROVIDE LOCK-ON BREAKER. 4) WIRING SIZE SHALL BE #10 MINIMUM.

PANELBOARD: C. 208Y/120 VOLTS, 3 PHASE, 4 WIRE. 225 AMP MLO, FLUSH MTD. 42000 AIC LABELED. Table with columns: CIRC NO., LOAD V.A., LOAD TYPE, LOAD DESCRIPTION, AMP SIZE, W/GRD. BUS, LOAD DESCRIPTION, LOAD TYPE, LOAD V.A., CIRC NO.

1) CONTROLLED VIA PHOTOCELL/TIMELOCK. 2) WIRING SIZE FOR EXTERIOR LIGHTING AND MONUMENT SIGN SHALL BE #10 MINIMUM. 3) CONTRACTOR TO PROVIDE GFCCI BREAKER. 4) ALL EMERGENCY LIGHTING FIXTURE SHALL BE POWERED VIA LIGHTING INVERTER (LVS, MODEL: CEPS-A-2000-120V). REFER TO LIGHTING PLAN SHEET E-200 & E-201, AND LIGHTING SCHEDULE ON SHEET E-500 FOR MORE INFORMATION. CONTRACTOR TO PROVIDE ALL CONTROLS AS REQUIRED AS PER MANUFACTURER REQUIREMENTS, AND REFER TO INVERTER SPECIFICATION AND DETAILS FOR WIRING INFORMATION. 5) WIRING SIZE SHALL BE #10 MINIMUM. 6) PROVIDE RED BREAKER LOCK-ON CLIP.

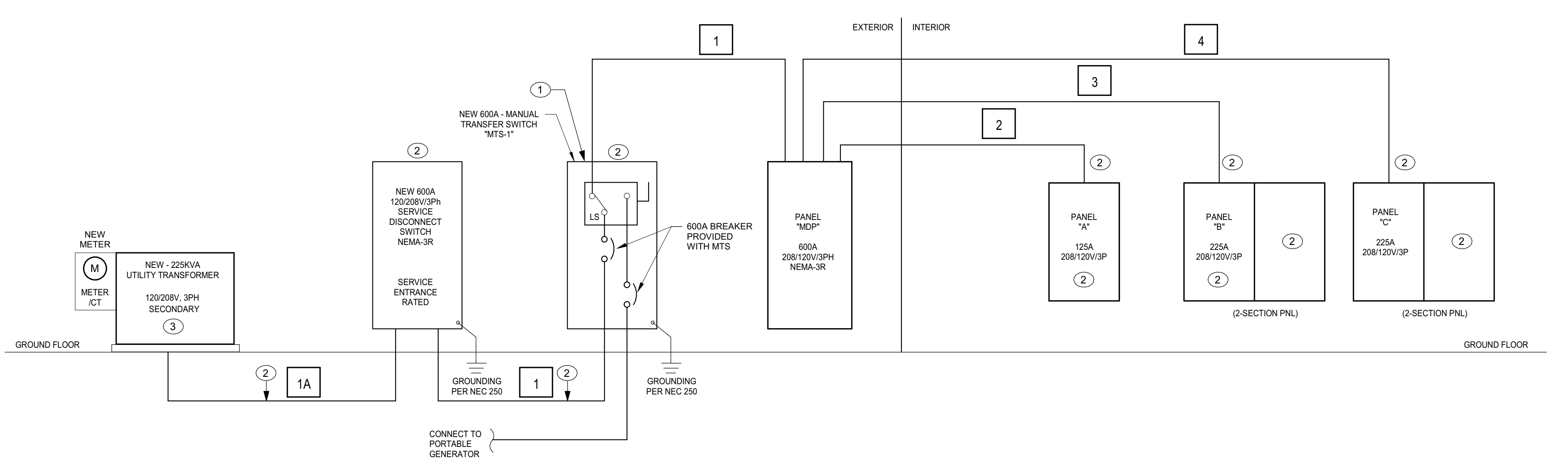
PANELBOARD: A. 208Y/120 VOLTS, 3 PHASE, 4 WIRE. 125 AMP MLO, FLUSH MTD. 42000 AIC LABELED. Table with columns: CIRC NO., LOAD V.A., LOAD TYPE, LOAD DESCRIPTION, AMP SIZE, W/GRD. BUS, LOAD DESCRIPTION, LOAD TYPE, LOAD V.A., CIRC NO.

1) CONTRACTOR TO PROVIDE GFI BREAKER.

BMS SYSTEM INSTALLATION. CONTRACTOR NOTES: CONTRACTOR TO ROUTE LIGHTING CONTROLS TO BMS SYSTEM UTILIZING SSX & BMS PANELS. COORDINATE PANELS LOCATIONS, POWER, DATA, AND ANY ADDITIONAL REQUIREMENTS WITH UNIFY ENERGY SOLUTION PRIOR TO BID, AND INCLUDE ALL ASSOCIATED COSTS IN BID WITH NO ADDITIONAL COST TO OWNER. CONTRACTOR TO PROVIDE FOLLOWING ITEMS: PROVIDE STUB UPS FOR TIMED LIGHTING OVERRIDE (TLO) PER PRINTS. INSTALL UNIFY PROVIDED LIGHTING CONTACTORS. WIRE HIGH VOLTAGE LIGHTING CIRCUITS TO CONTACTORS. PROVIDE STUB UPS FOR ROOM TEMPERATURE SENSORS. REFER TO MECHANICAL SHEETS FOR MORE INFORMATION. PROVIDE CONDUIT STUB UP FROM PLENUM TO RTU'S CONNECTIONS. REFER TO MECHANICAL SHEETS FOR MORE INFORMATION. PROVIDE 120V DEDICATED CIRCUIT FOR BMS PANEL. RUN INTERCONNECTING WIRING FROM BMS PANEL TO SSX PER UNIFY SUBMITTALS. PROVIDE ALL ITEMS AS REQUIRED FOR FULL WORKING OPERATION PER MANUFACTURER RECOMMENDATIONS.

COORDINATION NOTES. 1. REFER TO JOB SPECIFIC NOTES ON SHEET A-100. 2. MECHANICAL, PLUMBING, AND ELECTRICAL SUBCONTRACTORS ARE REQUIRED TO COORDINATE WITH EACH OTHER. REFER TO ALL SHEETS IN THE SET FOR CONSTRUCTION CONDITIONS, NOT JUST THE DRAWINGS PERTAINS TO THEIR DISCIPLINE. 3. FINAL LOCATION OF ALL SURFACE FEATURES ARE TO BE VERIFIED WITH ARCHITECTURAL DRAWINGS AND/OR ARCHITECT PRIOR TO INSTALLATION. 4. ALL WORK SHALL BE PERFORMED BY PROPERLY LICENSED MECHANICS / PLUMBERS OR UNDER THEIR DIRECT SUPERVISION. 5. ALL EXPOSED PIPE, CONDUITS, AND DUCTWORK TO BE PREPARED BY TRADE FOR PRIME AND FINAL PAINT BY G.C. SEE ARCHITECTURAL SPECIFICATIONS.

DISTRIBUTION PANEL: MDP. CONNECTED KVA, DEMAND FACTOR, CONT. FACT, SIZING AMPS. Table with columns: PH-A, PH-B, PH-C, TOTAL, KVA, FACT, TOTAL, PH-A, PH-B, PH-C.



TI ONE LINE DIAGRAM NTS

FEEDER SCHEDULE. Table with columns: DESIG, EQUIPMENT SERVED, CONDUCTORS (SETS, NO., SIZE), GROUND SIZE PER SET, ISOLATED GROUND SIZE, CONDUIT SIZE PER SET, SPARE CONDUIT.

ONE-LINE DIAGRAM NOTES. 1. MANUAL TRANSFER SWITCH (MTS) RATED 600A, 120/208V, 3PHASE NEMA-3R, 4 POLE WITH CIRCUIT BREAKER DISCONNECT, SERVICE RATED, AND MALE CAMEL-LOCK CONNECTORS. ESL MODEL: SSS4-600-C-600-C-208-31-S-C. 2. CONTRACTOR PROVIDED. 3. UTILITY PROVIDED, AND INSTALLED. CONTRACTOR TO PROVIDE UNDERGROUND CONDUIT AND CONDUCTORS BACK TO MTS-11 SWITCH. CONTRACTOR TO COORDINATE THE TRANSFORMER PAD, AND ANY ADDITIONAL REQUIREMENTS WITH UTILITY PRIOR TO START ANY WORK, AND PROVIDE ALL ITEMS AS REQUIRED.